



# Forage and Livestock eNews

*Updates and information from across the industry*

February 18, 2014 - Vol 6, Issue 2

## Articles In This Issue

SFC is Now on Twitter!

New Provincial Specialist, Forage Crops

Saskatchewan Pasture Tour

Snow as a Water Source

Agriculture Student Scholarships

New Ag Operator Program

Enhancements for Crop Insurance Program

Foragebeef.ca Resources

The Value of Saskatchewan's Forage Industry

News and Upcoming Events

Become a Saskatchewan Forage Council Member

[Join Our Mailing List!](#)

## Quick Links

[Saskatchewan Forage Council](#)

[Forage Industry News](#)

[Upcoming Events](#)

## Dear Coy,

As we near the end of February it is tempting to anticipate the arrival of spring. The winter has felt long due to the early start, much like last year; and with memories of last year's late spring,



producers are hoping for more normal seasonal conditions this year. The recent warm up in temperatures has been welcomed by producers and livestock alike who just finished enduring the lengthy cold snap. These extreme temperature fluctuations have been difficult to adjust to, however, the warm swings are hard to turn down when they are offered. Livestock feeding continues across the province and some operations are attempting to secure additional feed sources to extend the stacks.

This issue of the *eNews* focuses on the new SFC twitter account, an introduction to the new provincial forage specialist in Saskatchewan, details of the Saskatchewan Pasture Tour, some information about snow as a water source, scholarships for agriculture students, a release about the Agricultural Operator Program, enhancements to Crop Insurance, and some Foragebeef.ca resources. There are also some important upcoming industry events.

Please feel free to forward the *eNews* on to others you think

may be interested in forage and livestock industry updates - signing up is as easy as clicking the 'Join Our Mailing List!' on the left. Your feedback and content ideas are always appreciated.

Your *Forage and Livestock eNews* Editor,  
**Coy Schellenberg, PAg**

*Image Credit: Winter Feeding - Shannon Schellenberg, Beechy, SK*

## SFC is Now on Twitter!

The Saskatchewan Forage Council (SFC) has taken the plunge into social media. The SFC has recently opened a twitter account and will use it as another means of connecting with forage industry stakeholders, passing on project information, publications, program details and upcoming events. If you have anything to do with the forage and livestock industry in SK, you will want to follow us on twitter!

*You can follow us now on twitter @saskforage*

[Top of Page](#)

## New Provincial Specialist, Forage Crops - Terry Kowalchuk

*Saskatchewan Ministry of Agriculture - Staff Update (January 27, 2014)*



Crops and Irrigation Branch is pleased to welcome Terry Kowalchuk as the new Provincial Specialist, Forage Crops. Terry graduated with a MSc. degree from the University of Saskatchewan in 1990 and has worked with the former PFRA for the past 23 years. As a programs and technical lead for Agriculture and Agri-Food Canada (AAFC) Land Stewardship Programs, Terry gained extensive experience in working with the forage and livestock sectors and has a well-established network of contacts with government and industry representatives. In his most recent role with AAFC he was the Technology Transfer Specialist with Science and Technology Branch and was co-located with the Saskatchewan Ministry of Agriculture (MOA) Ag Knowledge Centre in Moose Jaw where he helped improve knowledge transfer between the MOA and AAFC. Please join me in welcoming Terry as we put his experience to work as the Provincial Specialist, Forage

Crops. Terry can be reached at 306-787-7712.

*Image Credit: Terry Kowalchuk, Saskatchewan Ministry of Agriculture*

[Top of Page](#)

The organizing committee for the Saskatchewan Pasture School has made a decision to move to a one-day pasture tour and change the name of this event to the Saskatchewan Pasture Tour. This change comes as a means of increasing interest in one-day events as many producers find it difficult to be away from home for extended periods of time. While the date is not finalized, we are also making a move to the first week of August. This year's tour will be in the Yorkton/Touchwood Hills area.

To view the Saskatchewan Pasture Tour flyer, [click here](#).

For more information, contact the Saskatchewan Forage Council at 306-969-2666.

[Top of Page](#)

## Snow as a Water Source

*Saskatchewan Ministry of Agriculture - Stay Connected (February 10, 2014)*

The Saskatchewan Veterinary Medical Association would like to remind beef cattle producers to check snow conditions in their pastures regularly if they are relying on the snow to water their cattle. Non-lactating beef cattle can meet their water requirements by consuming snow as long as the snow is of proper quality and sufficient quantity. The snow must be loose, non-crustrated and deep enough to cover the ground. Changing weather conditions can cause snow to disappear and the quality of snow as a water source will deteriorate due to blowing wind, thawing, refreezing and crusting. If in doubt, provide cattle access to fresh water.

For more information, contact: Joseph M. Stookey, PhD at 306-966-7154 or [joseph.stookey@usask.ca](mailto:joseph.stookey@usask.ca).

[Top of Page](#)

## Agriculture Student Scholarships

*Editor's Note: The Saskatchewan Ministry of Agriculture and the Saskatchewan Institute of Agrologists are offering scholarships to Saskatchewan students pursuing post secondary education in Agriculture.*

*Saskatchewan Ministry of Agriculture - Stay Connected (February 10, 2014)*

### **Saskatchewan Agriculture Student Scholarships**

Saskatchewan's agriculture industry is full of opportunities—from production, research and processing to manufacturing, finance and everything in between. In fact, the industry accounts for over 50,000 jobs across the province and it continues to grow. The Saskatchewan Ministry of Agriculture offers the Agriculture Student Scholarship which awards one winning scholarship valued at \$4,000 and three runner-up scholarships valued at \$2,000 to students willing to speak up and tell the exciting story of the industry.

The application deadline is **March 1, 2014**.

For more information about these scholarships and how to apply, [click here](#).

*Saskatchewan Institute of Agrologists - Update (February 10, 2014)*

### **SIA Branch Scholarships**

The Saskatchewan Institute of Agrologists (SIA) understands that youth are the future of our industry. To support youth in achieving their career in agrology related sectors, including agriculture, bioresources, food or the environment, the Institute's six branches are each awarding a scholarship of \$1000 to candidates who meet the eligibility requirements and demonstrate a desire to pursue a career in agrology.

The application deadline is **April 15, 2014**.

For more information about these scholarships and how to apply, [click here](#).

[Top of Page](#)

## **New Agricultural Operator Program Launched in Saskatchewan**

*Saskatchewan Ministry of Agriculture - News Release (January 29, 2014)*

Today, Federal Agriculture Minister Gerry Ritz and Saskatchewan Agriculture Minister Lyle Stewart announced the launch of the Agricultural Operator Program.

"Our government recognizes the importance that labour plays in driving growth in our agriculture industry," Ritz said. "Today's investment will help those interested in a career in agriculture develop the knowledge and skills needed to find gainful employment here in Saskatchewan."

"Producers have indicated that they need more skilled labour for their operations and this program directly responds to their needs," Stewart said. "Farmers can send current or potential employees through the program to develop or help fine tune their skills. Additionally, general labourers without a farm background will have an opportunity to gain the experience needed to get involved in the industry."

The Agricultural Operator Program was a commitment made in the Saskatchewan Plan for Growth. It is a module-based program offering practical, hands-on training to individuals interested in working on Saskatchewan farms. Students and employers will have the flexibility to choose the entire program or specific modules relevant to their farms.

To read the complete *SK Ministry of Ag News Release*, [click here](#).

[Top of Page](#)

## **Enhancements Continue for the 2014 Crop Insurance Program**

Today, Federal Agriculture Minister Gerry Ritz and Saskatchewan Agriculture Minister Lyle Stewart announced details of the 2014 Crop Insurance Program, which includes a number of new features to help producers mitigate their risk.

"Agriculture continues to be a key driver of the Saskatchewan economy and we are working to improve our programs to help producers succeed and grow the industry," Stewart said. "The 2014 Crop Insurance Program includes improvements to assist Saskatchewan's farmers and ranchers as they look toward a new growing season."

Improvements to the Crop Insurance Program for 2014 include a pilot program to provide yield-loss coverage for corn in the east central and southeast areas of the province. In addition, the establishment benefit feature has also been expanded to include coverage for corn of \$65 per acre.

Also new in 2014, Crop Insurance will include a bee mortality insurance pilot program. The program will cover loss of bees over the winter as a result of naturally occurring causes that are beyond the control of producers.

To read the complete *SK Ministry of Ag News Release*, [click here](#).

[Top of Page](#)

## Foragebeef.ca - Nutrient Loading Calculator and Wintering Site Publication

*Foragebeef.ca - Update (February 9, 2014)*

[Foragebeef.ca](#) has added the following calculator and Wintering Site publication for your review and benefit.

Through the hard work of principal author Dennis Haak, Senior Soil Resource Specialist, Science and Technology Branch, Agriculture and Agri-Food Canada, Agassiz, B.C. and assisted by Kaytlyn Criddle, Dennis Lastuka and Dale Timmerman of Agriculture and Agri-Food Canada, Lorne Klein of Saskatchewan Agriculture, Mitchell Timmerman of Manitoba Agriculture, Food, and Rural Initiatives and Trevor Wallace and Barry Yaremco of Alberta Agriculture and Rural Development, the team have constructed the [Nutrient Loading Calculator \(NLC\) for In-Field or Extensive Livestock Winter Feeding Systems](#).

[Foragebeef.ca](#) has posted this Calculator into the Wintering Sites folder.

Through the hard working committee of Fiona Briody, Darren Bruhjell, Dale Evert, Dennis Lastuka and Perry Sawchuk of AAFC, Dianne Westerlund of the Chinook Applied Research Association for ARECA, Michelle McKinnon, Trevor Wallace, Karen Yakimishyn and Barry Yaremco of Alberta Agriculture and Rural Development the publication [Wintering Site: Assessment and Design Tool - A Guide to Selecting and Managing a Wintering Site in Western Canada](#) was built.

The committee thanks the farmers and ranchers of the three Prairie Provinces, Alberta Beef

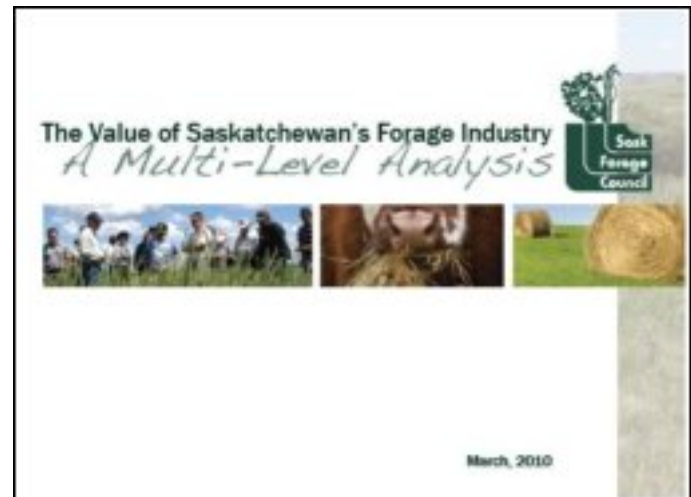
Producers, Saskatchewan Watershed Authority, Saskatchewan Ministry of Agriculture, Manitoba Agriculture Food and Rural Initiatives, all who provided review comments during the preparation of this publication. Technical support and funding was provided by Agriculture and Agri-Food Canada, Alberta Agriculture and Rural Development, the Agricultural Research and Extension Council of Alberta and Alberta Beef Producers. It was published by the Environmental Stewardship Division of Alberta Agriculture and Rural Development.

[Foragebeef.ca](http://Foragebeef.ca) has posted this Publication into the Wintering Sites folder.

[Top of Page](#)

## The Value of Saskatchewan's Forage Industry .....

To view the *Saskatchewan Forage Industry Analysis* Report, [click here](#).



[Top of Page](#)

## News and Upcoming Events

### **Feed Me! Forage & Livestock Update**

**February 24, 2014**

**Lanigan, SK**

This partnered event will host several interesting presentations focusing on forage and beef research, production info, new varieties, the area Agri-Environmental Group Plan, and a Saskatchewan Verified Beef Production workshop. It will be held at the Heritage Centre, Hwy #16 in Lanigan, SK from 1:00-5:00pm.

To view the event flyer, [click here](#).

For more information, contact Nadia Mori at 306.946.3219.

---

### **Feed Me! Forage & Livestock Update**

**February 26, 2014**

**Watrous, SK**

This partnered event will host several interesting presentations focusing on forage and beef research, production info, new varieties, the area Agri-Environmental Group Plan, and a Saskatchewan Verified Beef Production workshop. It will be held at the Heritage Room, Civic Centre in Watrous, SK from 1:00-5:00pm.

To view the event flyer, [click here](#).

For more information, contact Nadia Mori at 306.946.3219.

---

## **Common Tansy Weed Series - WEBINAR**

**February 26, 2014**

### **Online**

The Saskatchewan Ministry of Agriculture is hosting a Common Tansy weed series webinar that will focus on the biology and control options of this weed. The webinar will be held at 12pm.

Those that want to watch the webinar have to pre-register by going to:

<https://www2.gotomeeting.com/register/311180602>

To view the event poster, [click here](#).

For more information, contact John Hauer at 306.463.5507.

---

## **Non-Bloat Legume - WEBINAR**

**February 27, 2014**

### **Online**

The Saskatchewan Ministry of Agriculture is hosting a non-bloat legume webinar that will focus on Cicer Milkvetch and Sainfoin. The webinar will be held at 12pm.

Those that want to watch the webinar have to pre-register by going to:

<https://www2.gotomeeting.com/register/292854410>

To view the event poster, [click here](#).

For more information, contact Sarah Sommerfeld at 306.867.5559.

---

## **Feed Me! Forage & Livestock Update**

**March 5, 2014**

**Strasbourg, SK**

This partnered event will host several interesting presentations focusing on forage and beef research, production info, new varieties, the area Agri-Environmental Group Plan, and a Saskatchewan Verified Beef Production workshop. It will be held at the Wildlife Hall, Assiniboia Avenue, in Strasbourg, SK from 1:00-5:00pm.

To view the event flyer, [click here](#).

For more information, contact Nadia Mori at 306.946.3219.

---

[Top of Page](#)

## **Saskatchewan Forage Council Membership**

### **Be Sure Your Voice in the Forage Industry Counts!**

- Incorporated under *The Co-operatives Act*, a membership fee for the SFC is a one-time cost of \$25.00;
- The SFC has worked in the province on behalf of **ALL** forage industry stakeholders (and that's a very extensive and diverse group) for more than 20 years;
- If you are involved with production, management, protection, harvesting, storage, utilization or marketing of forage products, the SFC wants your involvement and input;
- The SFC is committed to placing a focus and awareness on the importance of forages in our province.

With a mandate to enhance the province's forage and grassland industry, the Saskatchewan Forage Council (SFC) strives to partner with all sectors of the industry - producers, industry organizations and companies, government and university.



Formed in 1988, our objectives are focused on the development and dissemination of information related to the production and utilization of all forage resources, prioritization of forage research and collaboration with governments to develop and implement effective policies and programs as they relate to forage production and marketing.

To learn more about becoming a member [Click Here](#).

[Top of Page](#)



***Forage and Livestock eNews*** is published by the Saskatchewan Forage Council (SFC).  
*Opinions and information are provided by the authors and publication does not imply endorsement by the SFC.*

***Financial support for the Forage and Livestock eNews has been provided in part by the Saskatchewan Forage Seed Development Commission.***



We welcome questions about article submission or to find out more about sponsorship,  
*please contact the Saskatchewan Forage Council at:*

*Email: [office@saskforage.ca](mailto:office@saskforage.ca)*

*Phone: 306.969.2666*

**The Saskatchewan Forage Council Gratefully Acknowledges funding for our 'Facilitating Forage Initiatives in Saskatchewan' project through the Saskatchewan Cattlemen's Association Saskatchewan Beef Industry Development Fund:**





The Saskatchewan Forage Council recognizes our Annual Supporters:



[Forward email](#)



Try it FREE today.

This email was sent to coyschellenberg@gmail.com by [office@saskforage.ca](mailto:office@saskforage.ca) | [Update Profile/Email Address](#) | Instant removal with [SafeUnsubscribe™](#) | [Privacy Policy](#).

Saskatchewan Forage Council | PO Box 87 | Ceylon | SK | S0C 0T0 | Canada